

Itineraries

Two-day sight-seeing/driving tour.

Take a leisurely drive through picturesque Petersburg, and stop for a tour of the Edgar Lee Masters Memorial Museum. Visit Masters' grave and that of Ann Rutledge at Oakland Cemetery before lunch. Then head out to Oakford for a pleasant visit at Hill Prairie Winery. Spend a relaxing evening at a local B & B, and rise refreshed for a morning of antiques in downtown Petersburg. Eat lunch in one of the casual, friendly restaurants on the square, and then tour Lincoln's New Salem before heading out to Athens to visit the Long Nine Museum.

Three-day history or outdoor tour.

Spend Day One at Petersburg's historic sites (including nearby New Salem) and antique stores, or play golf before heading out to Hill Prairie Winery. On Day Two, take a short drive to Springfield to visit the Lincoln sites before returning for an evening performance of Theatre in the Park at Lincoln's New Salem. The outdoor enthusiast will enjoy a day at Jim Edgar Panther Creek Fish & Wildlife Area. On Day Three, take a drive to the Long Nine Museum in Athens before continuing on to your next destination.

All information here was accurate in June 2006, but openings and hours can change. For additional, up-to-date information on Menard County sites and events, log on to www.menardil.com.

Questions? Email us at tourism@menardil.com
Menard County Tourism Council, 2006

Large cover photo courtesy of The State Journal-Register

40M / June 2006



Menard County...

Discover its History.

Experience its Charm.



Thinking about a vacation or a long weekend away from the responsibilities of work and home? Unwind in Menard County. You'll appreciate the slower pace, the quieter streets, and the unique places that await you. Take a refreshing walk or invigorating hike, play some golf, or hunt. Do some casual shopping or serious antique buying. Learn something new about a fascinating place. Put your feet up in your room or suite—or set out on an outdoor adventure.



Make Menard County your vacation headquarters. It's just minutes away from other places you'll want to visit. Springfield, the state capital, is only 25 minutes away. There, you can enjoy the day touring the Lincoln sites, including the new state-of-the-art Abraham Lincoln Presidential Museum. Back in Petersburg for the evening, you can enjoy one of the award-winning theater or musical performances. Or listen to each other while you marvel at the night sky.

Treat yourself to the friendly service of our local innkeepers. Stay at one of Petersburg's charming bed and breakfasts where you can relax in the genteel comfort of a 19th-century mansion updated with all the modern conveniences. With their old-fashioned surroundings, traditional breakfasts, and obliging hosts, our bed and breakfasts offer the classic B & B experience. If you are looking for a more casual atmosphere, try one of the other lodgings geared toward the outdoors person.

Treasures await you. . . .

Arrayed around the courthouse square are antique and gift shops staffed by friendly, knowledgeable shopkeepers. Take a lunch break at one of the restaurants, or indulge yourself with gourmet coffee or chocolates. If a drive in the country suits you, make your destination a garden wonderland or the local winery.



Try one of our unique lodgings.
Your home away from home...

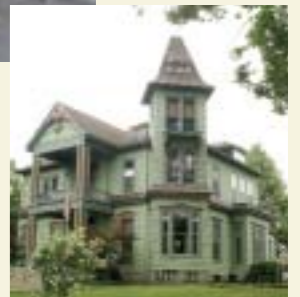
Branson House Bed & Breakfast



Behind the imposing façade of this stately 1876 house are 4 handsome guest rooms completely updated with

private, modern baths and central air. An elevator provides easy access to the second-floor bedrooms. 324 W. Jackson St., Petersburg, IL 62675. 866-562-5095.

www.BransonHouseBnB.com



Maple Crest Bed & Breakfast

Surrounded by maple trees on one of the highest hills in Petersburg, Maple Crest (built in 1865) melds old-time



elegance and modern convenience. Choose from a pair of two-room suites (with private baths) or two

charming rooms with shared baths. A tasty family-style breakfast is served every morning. 319 S. 9th St., Petersburg, IL 62675.

800-653-8012. www.maplecrest.us



The Oaks Bed & Breakfast

Relax in one of the 7 accommodations (3 suites and 4 rooms) available in this 1875 Victorian mansion. Enjoy in-room fireplaces, whirlpools, or your own porch. Antique furnishings and original features grace the house, which is situated on 5 1/2



park-like acres. 510 W. Sheridan St., Petersburg, IL 62675. 888-724-6257.

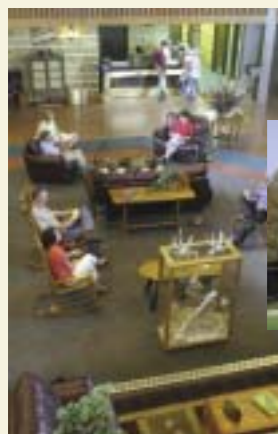
Inn at New Salem

Choose from 3 suites and 3 rooms, all with kitchenettes and each decorated with a theme. These reasonably priced rooms are perfect for travelers on a budget and for hunters who want to take advantage of the next-door convenience store, which sells snacks, drinks, pizza, and deli sandwiches. 14178 State Highway 97, Petersburg, IL 62675, 217-632-7787.



RiverBank Lodge

This newly opened lodging and conference facility combines the amenities of a modern hotel with



the ambience of a Northwoods lodge. Choose from single rooms or suites. Wireless Internet, Jacuzzis, cable TV, laundry facilities, and a game room are available to guests. 522 S. 6th St., Petersburg, IL 62675. 217-632-0202. www.riverbanklodge.com

Campgrounds

Lincoln's New Salem. This modern campground features 200 campsites, areas for tents and trailers, electrical hookups, and a sanitary station. Showers and restrooms are closed Dec. 1–Apr. 1. Campground open 7 days a week Mar. 1–Dec. 1. 15588 History Lane, Petersburg, IL 62675. 217-632-4000. www.LincolnsNewSalem.com

Deer Park. Bring your tent or RV and camp in the shady woods of this 38-acre campground. Spacious campsites (with or without electricity), showers, playground, swimming, and fishing await you. Open Apr. 1–Oct. 31. 18328 Deer Park Lane, Tallula, IL 62688. 217-632-7983.

See the sights at your own pace...

See as much or as little as you like. There's a lot to choose from — historic sites, great old buildings, and one-of-a-kind places that will entertain, educate, and delight you.

Long Nine Museum

Exhibits in this ca. 1832 general store building highlight Athens's history and its connection to Abraham Lincoln, who toasted the village at a banquet to honor him and the 8 other tall legislators (nicknamed "the Long Nine") for their role in successfully relocating the state capital from Vandalia to Springfield. Open Tues.–Sat., 1–5 p.m. from May–Sept., or by appointment. 200 S. Main St., Athens, IL 62613. 217-636-8755.



Lincoln's New Salem

Imagine your life—and Abraham Lincoln's—in this reconstruction of the village where Lincoln lived from 1831 to 1837. Tour the 23 log buildings with period furnishings, watch 19th-century craft demonstrations by costumed interpreters, and visit the modern museum. Open 7 days a week Apr. 1–Labor Day. Day after Labor Day to Mar. 31, closed Mondays and Tuesdays.



15588 History Lane, Petersburg, IL 62675. 217-632-4000. www.LincolnsNewSalem.com

Edgar Lee Masters Memorial Museum

The noted author of *Spoon River Anthology* spent several childhood years in this house, in which many pictures, letters, and furnishings are preserved. Open Tues.–Sat., 10 a.m.–noon and 1–3 p.m., Memorial Day–Labor Day, or by appointment. 8th and Jackson Sts., Petersburg, IL 62675. 217-632-7363. www.menardil.com

Ann Rutledge Grave

The young woman who may have been Abraham Lincoln's New Salem sweetheart is buried at Oakland Cemetery on Petersburg's southwest edge. www.menardil.com

Hill Prairie Winery

Come for the local wine, and stay for the entertainment, which includes weekend live music, music festivals, "Murder Mystery Dinner Theater" featuring hilarious whodunits, and other special events. Open Mon.–Sat. 11 a.m.–5 p.m. and Sun. noon–5 p.m. June 1–Dec. 31. Closed Mon. and Tues. Jan. 1–May 31. 23753 Lounsbury Rd., Oakford, IL 62673. 217-635-9900. www.hillprairiewinery.com



New Salem Country Opry

If you like friendly people and live music, you will love the Opry. Sit back in one of the 700 cushioned seats and enjoy regional and local country music. Open every Saturday evening year-round. 217-632-2630. 14305 State Highway 97, Petersburg, IL 62675. www.springfield-illinois.com/opry/

Theatre in the Park

From early June to late August spend an evening under the stars enjoying live theater and musical performances in the outdoor theater at Lincoln's New Salem. 800-710-9290. 15588 History Lane, Petersburg, IL 62675. www.theatreinthepark.net



For the outdoors enthusiast...

Menard County, with its beautiful woodlands and river valley, offers year-round opportunities for the outdoors enthusiast. Hike, camp, hunt, or play golf virtually any day of the year.

Jim Edgar Panther Creek State Fish & Wildlife Area

Ten miles west of Petersburg, 26-square miles of mature forest, grassland, and prairie await you. Hunting is allowed in season, and you can fish in lakes, ponds, and streams. A car/trailer parking lot is available to users of the exceptional equestrian trails and campgrounds. Hiking and mountain-bike trails will lure enthusiasts, and a paved



Photo courtesy of The State Journal-Register.



bicycle trail and shorter trails await the more leisurely visitor. Open year-round 7 days a week. 10149 County Highway 11, Chandlerville, IL 62627. 217-452-7741. www.dnr.state.il.us

Outfitters

If you need an outfitter for canoeing, trail exploration, or hunting, check out the website www.menardil.com.

Golf

Golfers can choose from three 18-hole courses that offer the beauty of rolling terrain, shady trees, and the sounds of nature. Country Hills (21723 Smoot St., Greenview, IL 62642. 217-632-7242. www.countryhillsgc.com); Shambole (101 S. Shore Dr., Petersburg, IL 62675. 217-632-2140. www.shambole.com); and Illinois National Golf Club at Arrowhead Point (illinoisnationalgolfclub.com), scheduled to open in 2006.